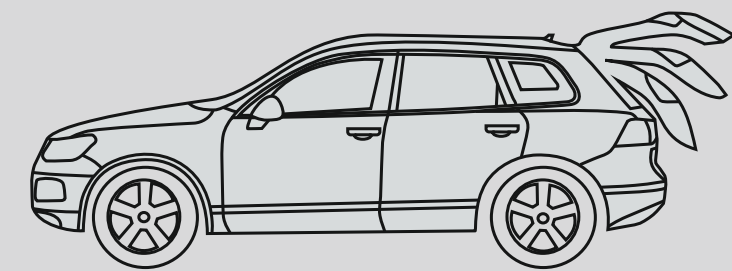




# Installation Process Electric tail gate lift system

TL105-5872



NO:5658723010000

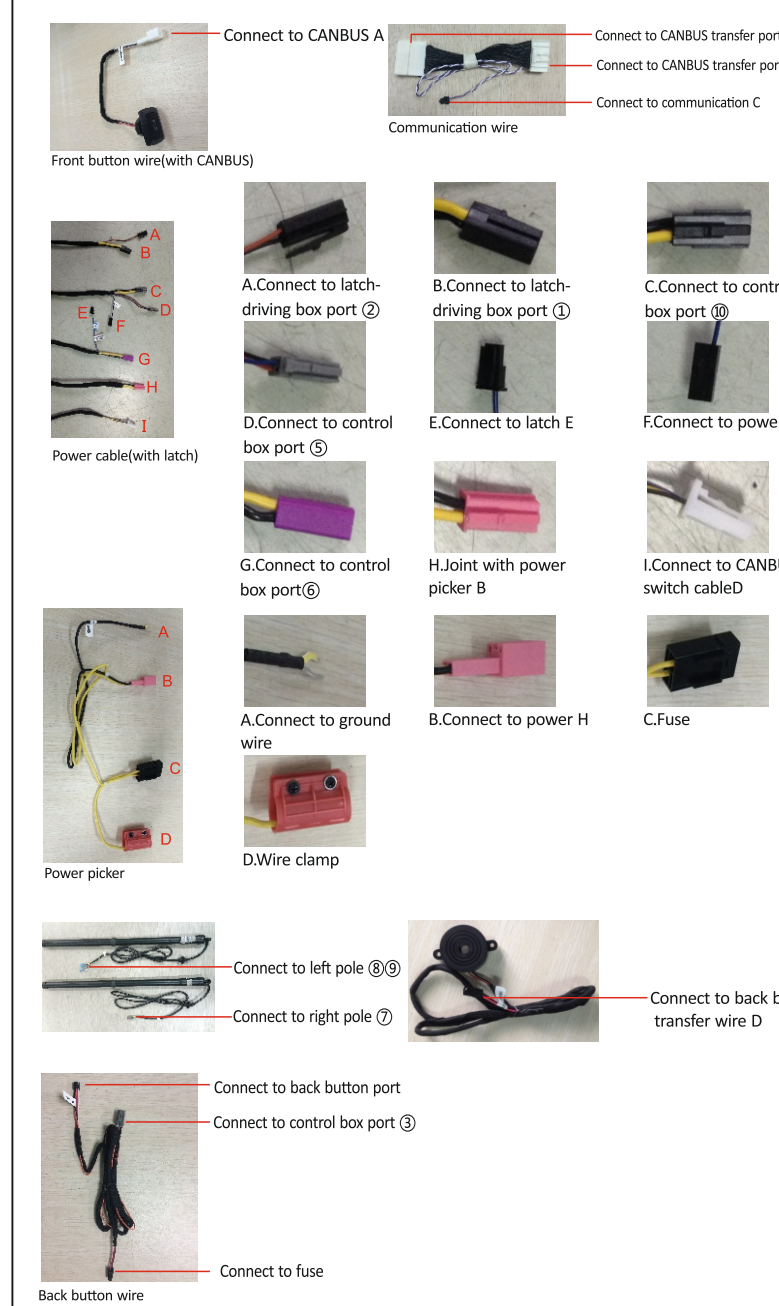
## NOTE

### Installation Precautions of Electric Tail gate Lifts

- To ensure safety and normal usage of our products, please let the professional sales staff to install; to avoid damaging the machine or causing accidents, please do not dismantle the products.
- To start the engine before installation, check the car dashboard display function, whether the buttons operate normally, whether there is any scratches on car interior and surface. If any problems, reflect to the customer immediately.
- Check whether the tailgate can normally open and close or not, check if there is any problem with the lights.
- Turn off the engine, prepare tools.
- For installation personnel: please remove metal objects and any other hard objects to prevent car damage during the installation process.
- Remove automotive components and place them carefully to avoid scratching the dashboard; wiring debris need to be tidied up in time, do not leave them in the car; joints must be well insulated to prevent short circuits.
- According to our wiring way, to avoid affect the car moving parts, such as steering column, the accelerator and brake pedals, etc., each harness should be fixed after wiring, to avoid getting loose.
- Connect each harness according to our wiring way (pay attention to the position of ground wire).
- Do not change the wires or accessories with the power on.

▲After installation, close the tail gate manually, so that the system can initialize.

## Cables Definition

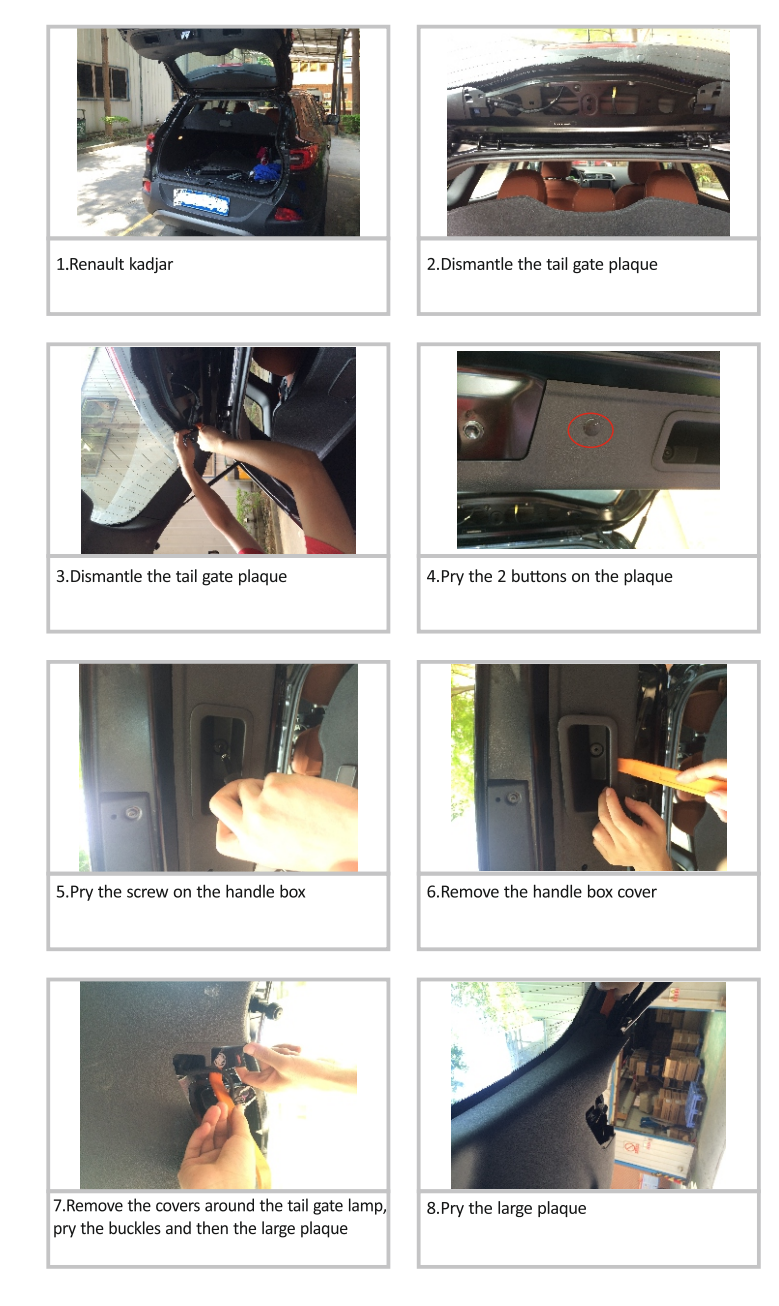


▲All above is subject to change without prior notice. All rights reserved.

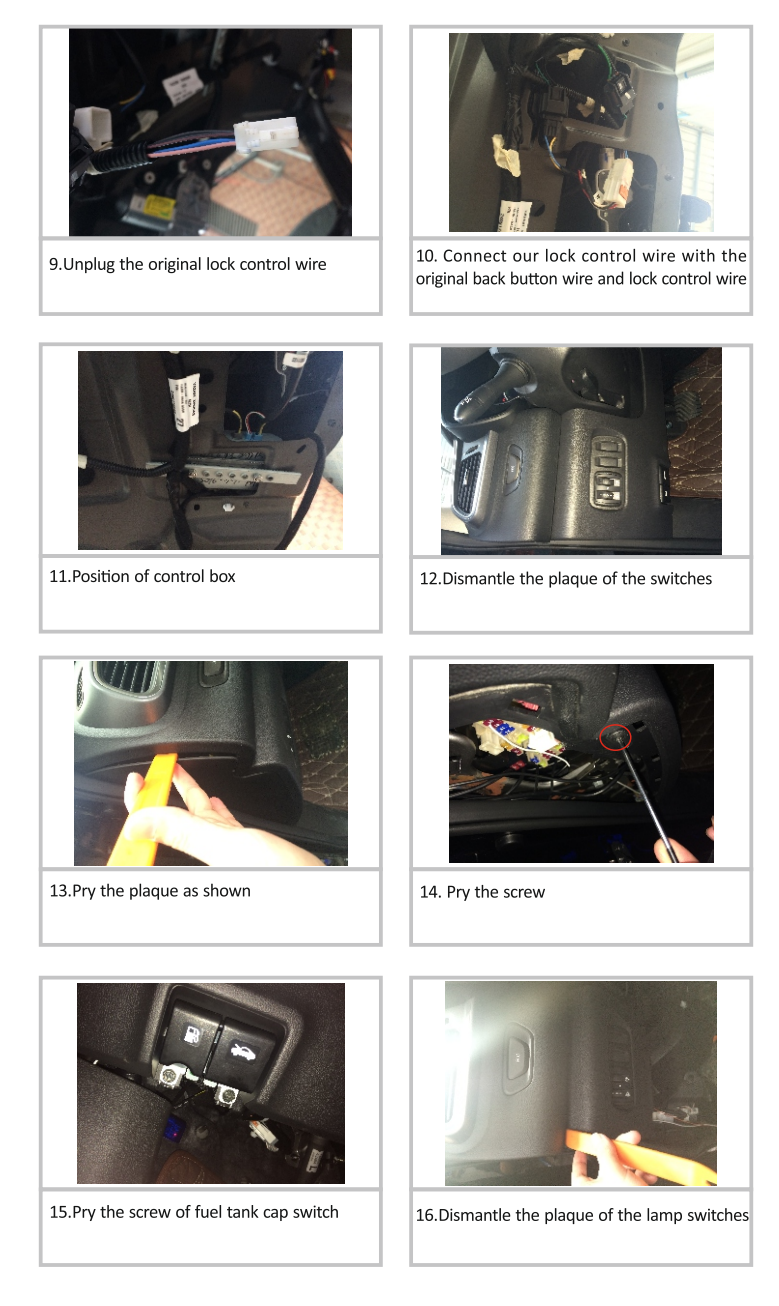
## Cables Definition



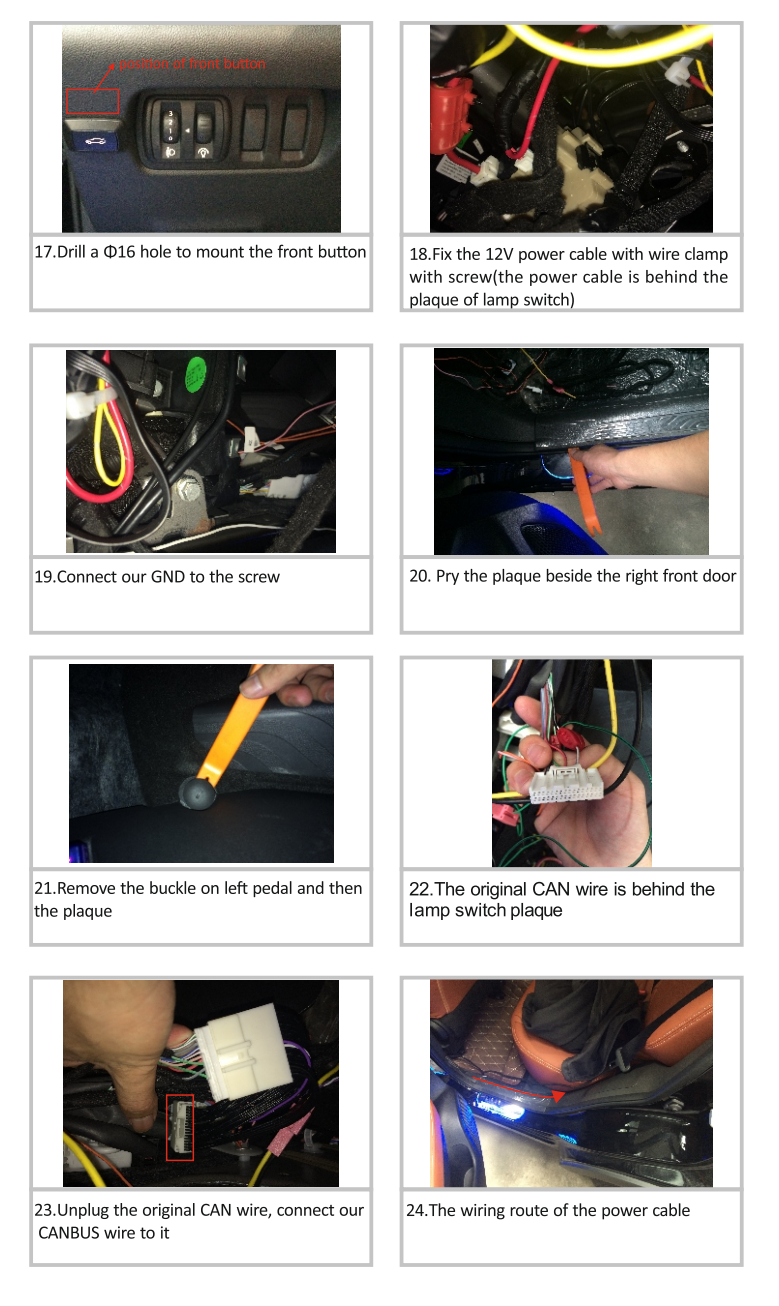
## Installation Steps



## Installation Steps



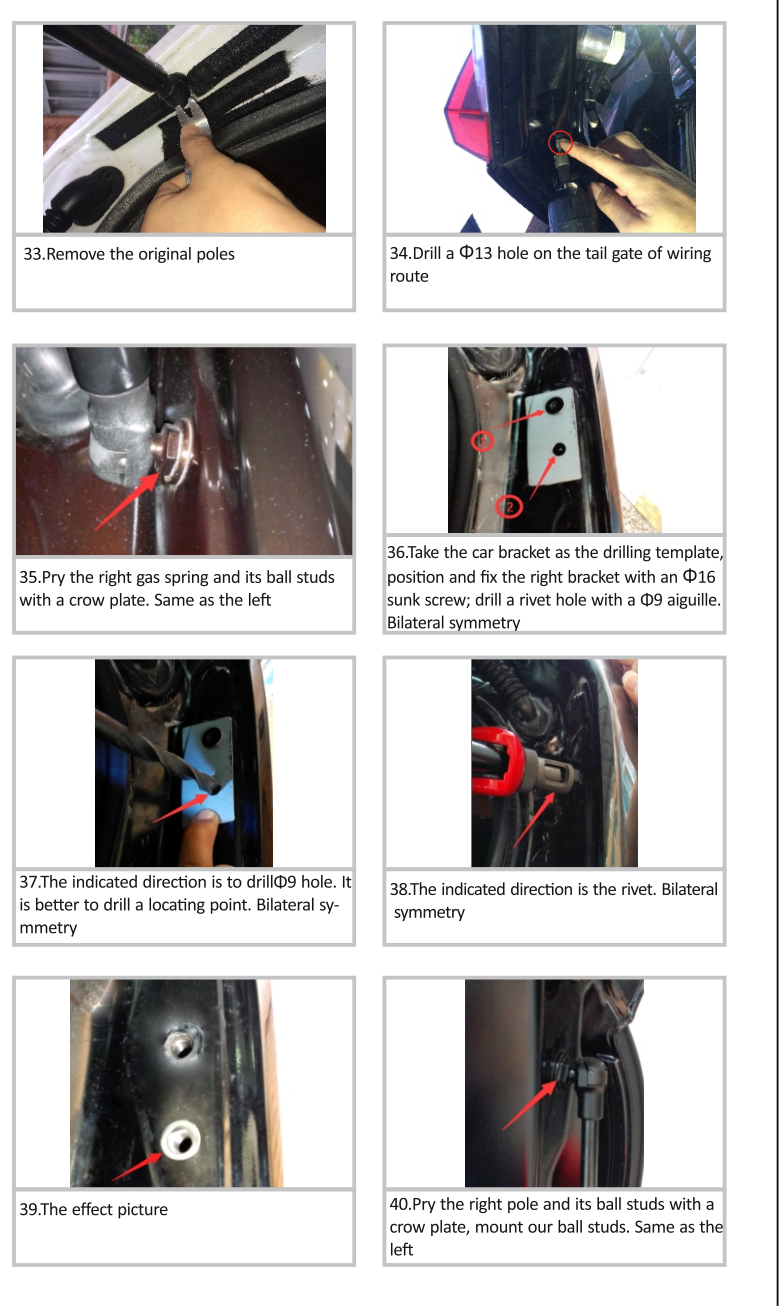
## Installation Steps



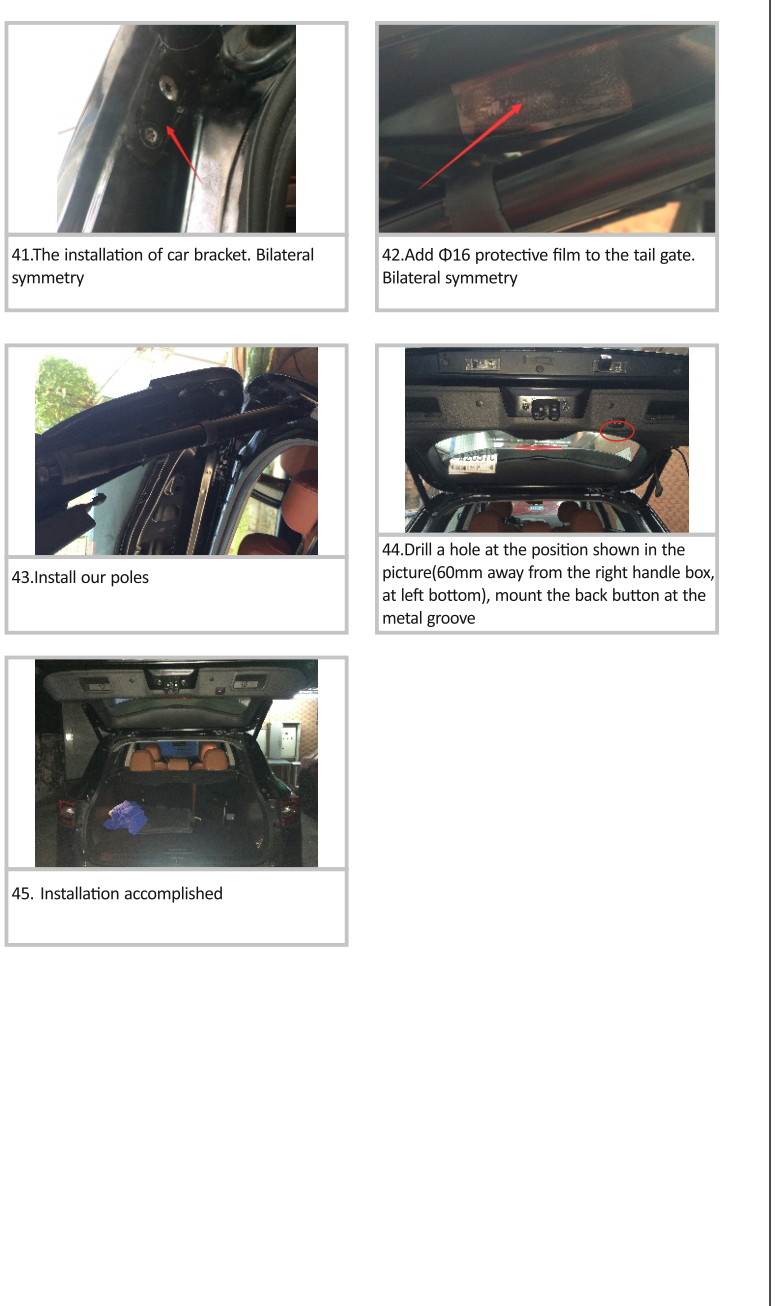
## Installation Steps



## Installation Steps



## Installation Steps



▲Remote control operation: long press the tail gate button