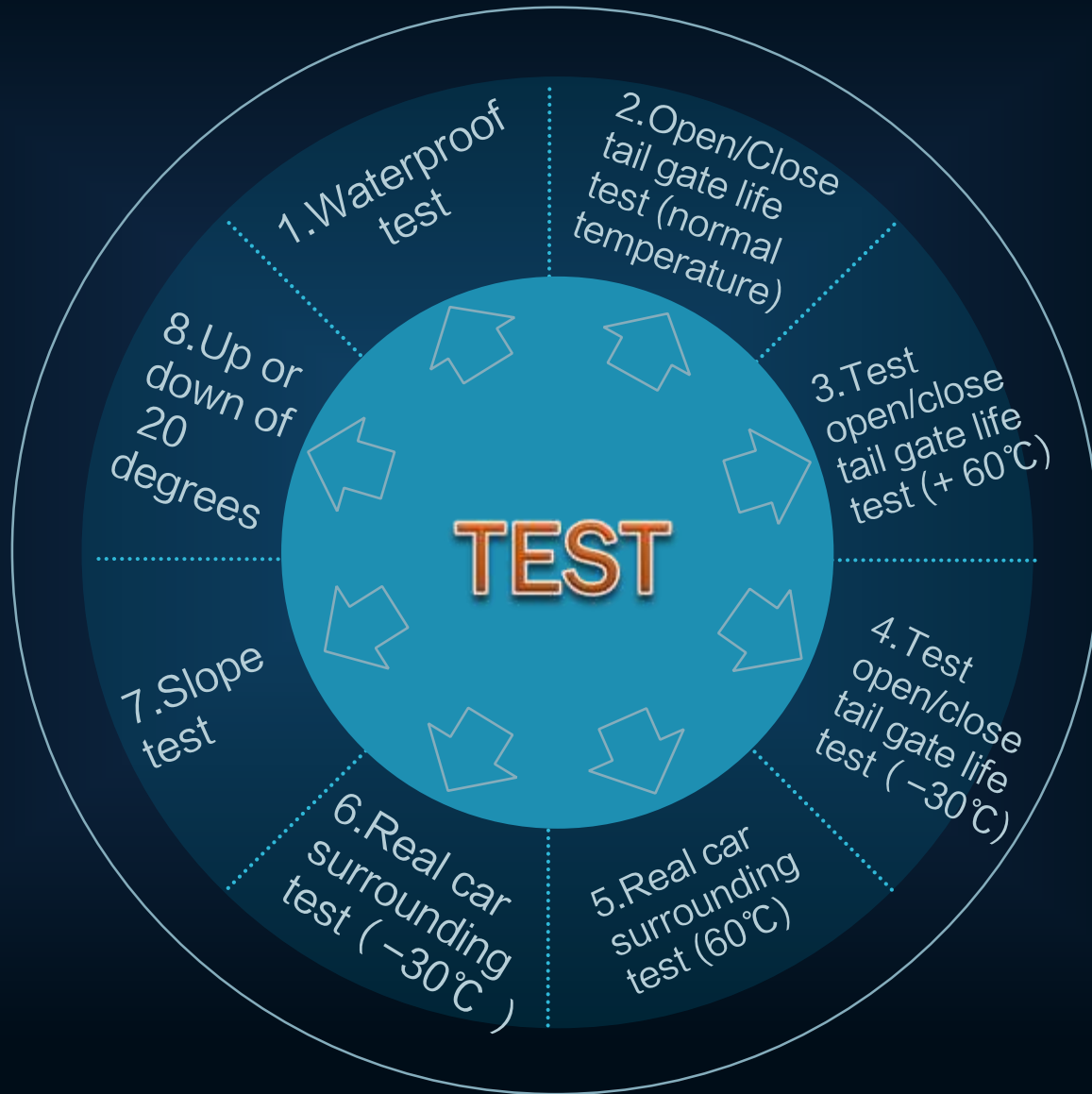


TL105^x Electric Tailgate Lift

Upgrade Your Car to the Next Level



1. Products test and verification



TEST

1. Waterproof test

2. Open/Close tail gate life test (normal temperature)

3. Test open/close tail gate life test (+ 60°C)

4. Test open/close tail gate life test (-30°C)

5. Real car surrounding test (60°C)

6. Real car surrounding test (-30°C)

7. Slope test

8. Up or down of 20 degrees

(1).Waterproof test

Standard IPX4 splashing water test, install the poles in the car:

- Test 1:
- Exposed to the water for 5 minutes ;
- Test2:
- Use Water Cannons to spray water on it, two poles, each 10 minutes. Spray water both ways 10 times, to check the water proof.



(2) Open/Close tail gate life test (normal temperature)

At normal temperature, To test the strength of open/close, the speed is fair or not, any noise or not,

Test more than 40,000 times.

Each 1000 times or 6 hours, run a manual or auto check.



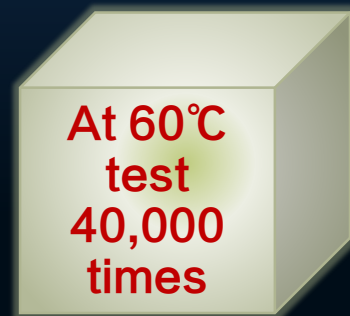
**Test
40,000
times**



(3) Test open/close tail gate life test (+ 60°C)

At temperature of 60°C, To test the strength of open/close, the speed is fair or not, any noise or not.

Test more than **40,000 times**.



+ 60°C



(4) Test open/close tail gate life test (-30°C)

At temperature of -30°C, To test the strength of open/close, the speed is fair or not, any noise or not.

Test more than **40,000 times**.

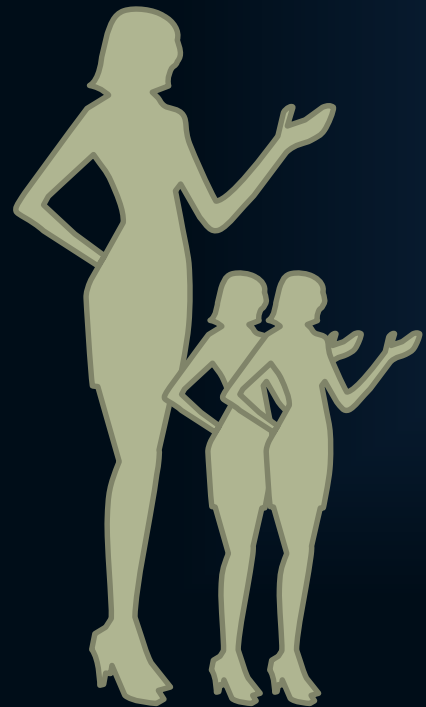


-30°C



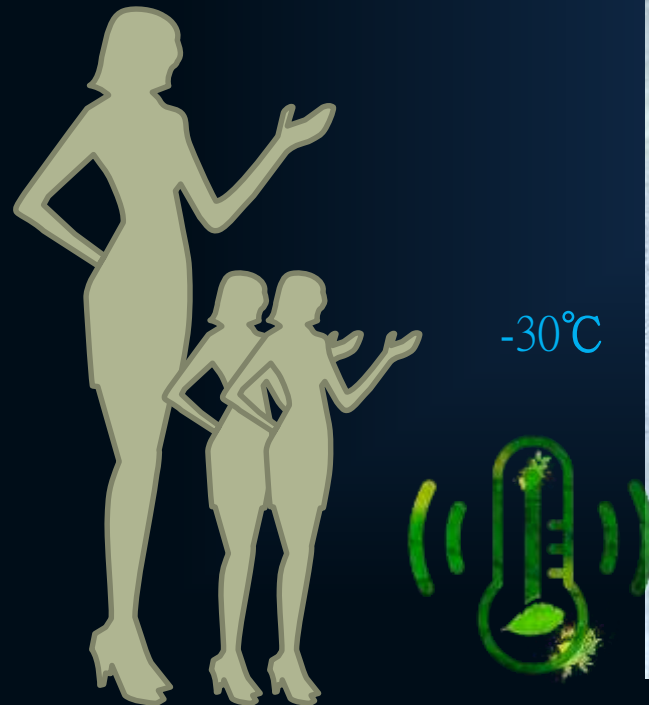
(5) Real car surrounding test (60°C)

At temperature of 60°C, to test the strength of open/close, the speed is fair or not, any noise, deformed or not.



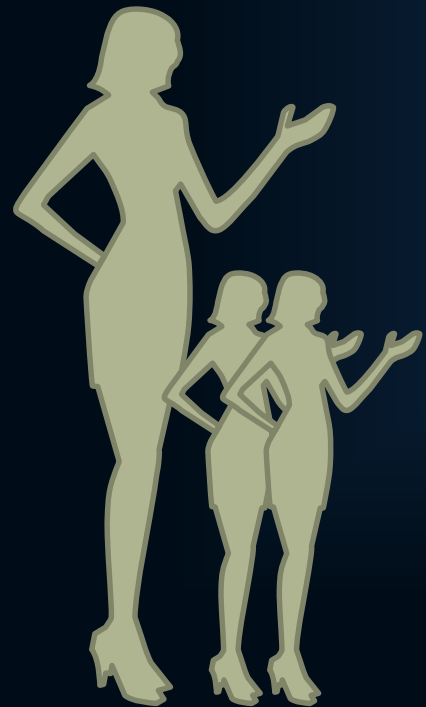
(6) Real car surrounding test (-30°C)

At temperature of -30°C , to test the strength of open/close, the speed is fair or not, any noise, deformed or not.



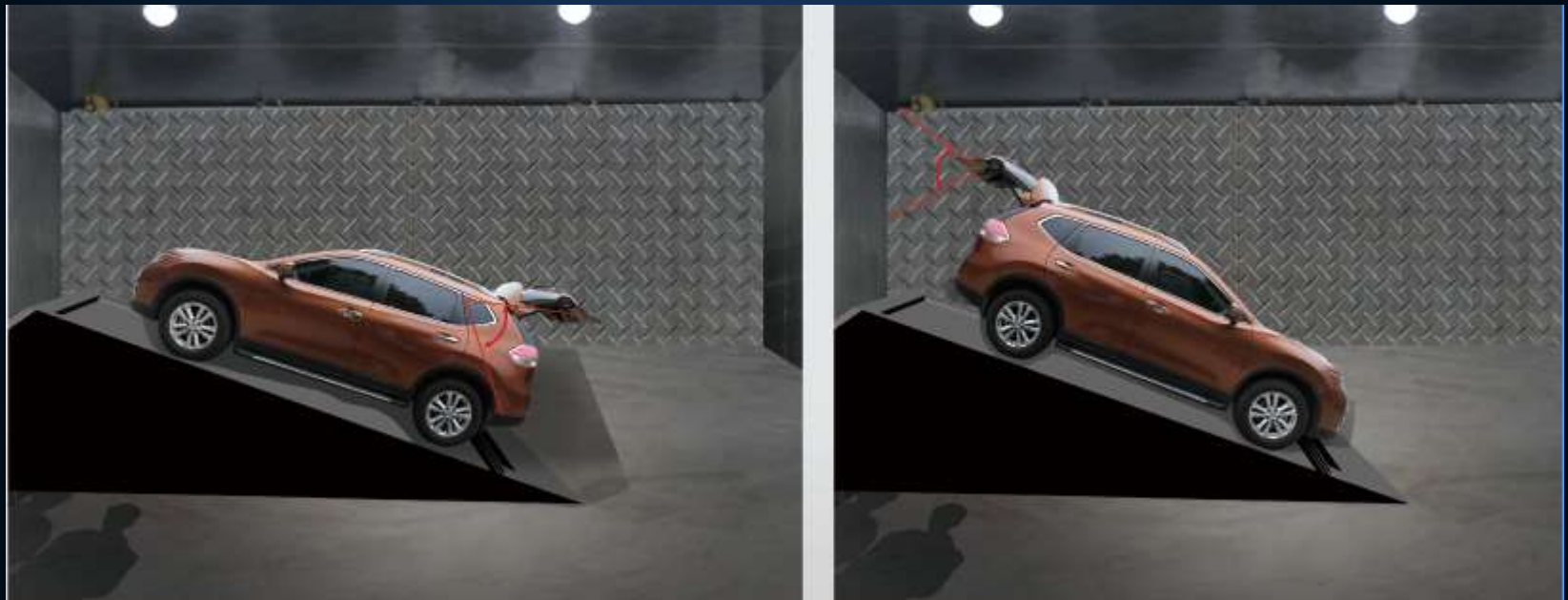
(7) Slope test

At slope of 20° ,To test the strength of open/close, the speed is fair or not, any noise, deformed or not.



(8) Up or down of 30 degrees slope test

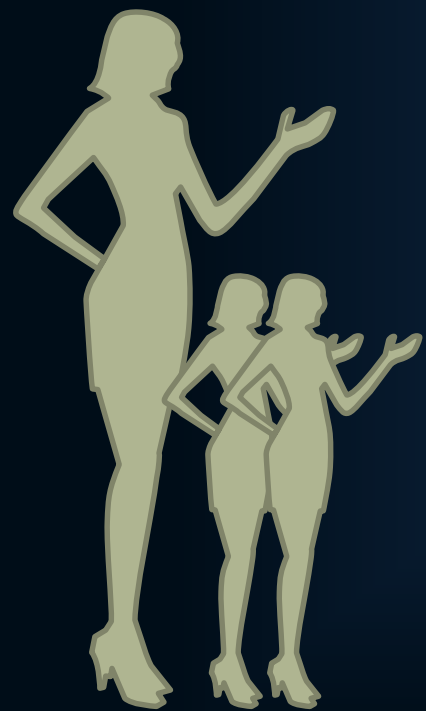
At slope of 20 degrees up or down, To test the strength of open/close, the speed is fair or not, any noise, deformed or not.



2. Test Instruments



Hot-and-cold House



Hot-and-cold House Interior



Power



Electricity Box





Spring Testing



Spin Riveting Machine

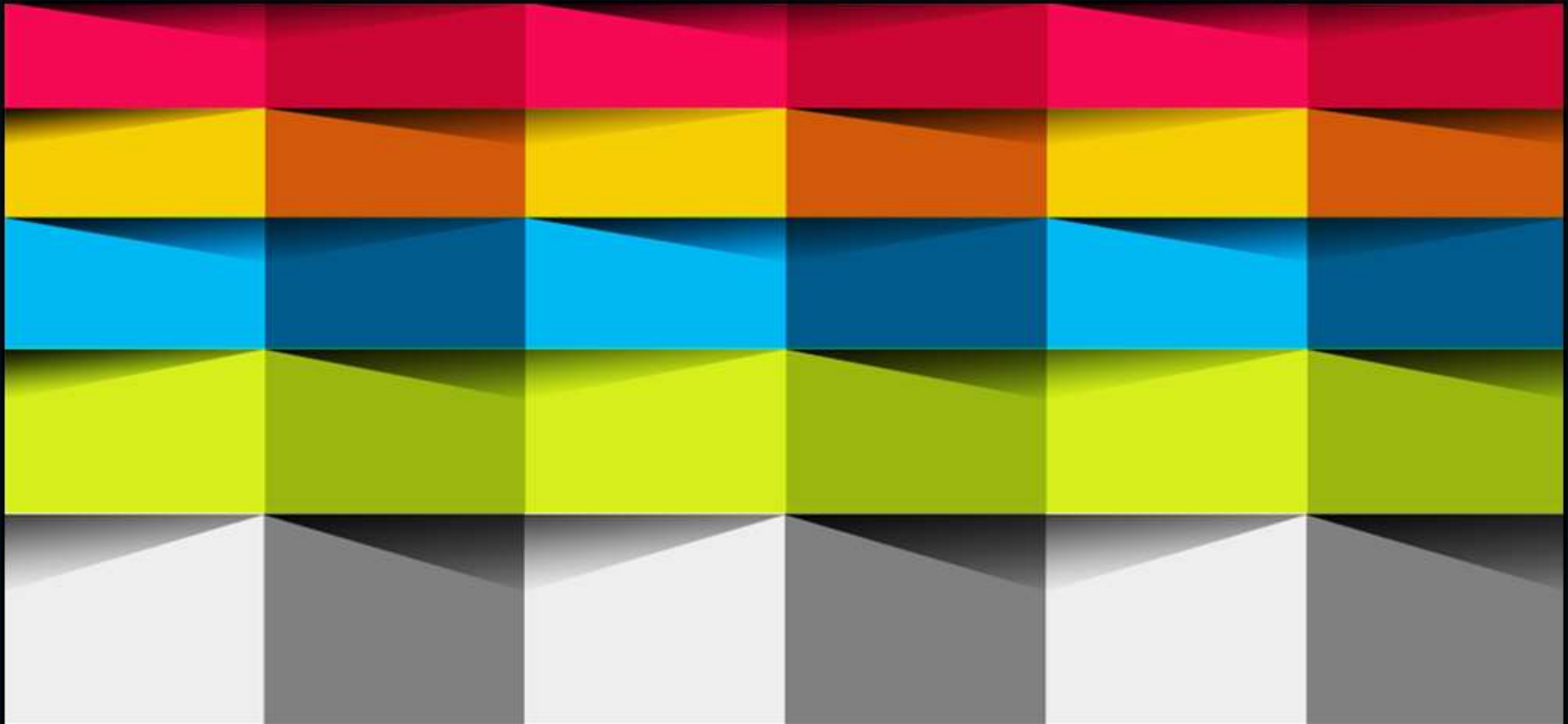


Ultrasonic Welding Machine





Working Line



**Thank You For
Reading!**